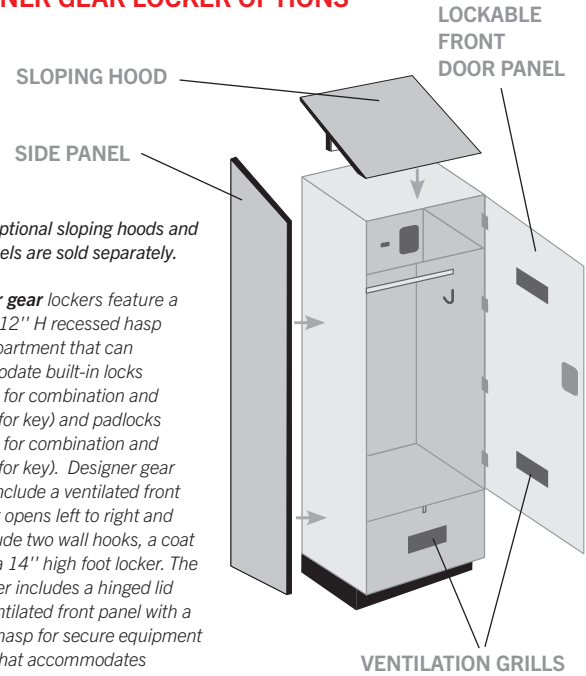


# 24" Wide Designer Gear Lockers

## 24" WIDE DESIGNER GEAR WOOD LOCKERS

Constructed of industrial grade particleboard and covered with durable high pressure laminate Salsbury 30000 series designer gear wood lockers are ideal when a secure environment for equipment, uniforms, clothing and many other applications is needed. Available in 18" and 24" depths, designer gear wood lockers are two (2) feet wide and six (6) feet high (add 4" for the black base) and are available in a gray, blue, black, maple, cherry or mahogany finish. Optional matching laminated sloping hoods and side panels easily attach to 24" wide designer gear lockers and provide a finished look to an individual locker or a row of lockers. Designer gear wood lockers feature a 3/4" deep ventilated front door that opens from left to right with four (4) heavy duty concealed hinges. Doors include a lift up handle and recessed hasp for added security – built-in locks (30010 for combination and #30015 for key), padlocks (#30020 for combination and #30025 for key), electronic locks (#30090) and resettable combination locks (#30095) are available as options upon request. Designer gear wood lockers feature an upper shelf with an 11" W x 12" H top compartment. The top compartment includes a 12" W x 3/4" D door and heavy duty concealed hinges and a lift up handle and recessed hasp for added security. The top compartment door includes a black name / number plate (custom engraving #30060 is available as an option upon request). Designer gear lockers also include two (2) single wall hooks, a coat rod and a 14" high foot locker. The spacious foot locker includes a hinged lid, a ventilated front panel, and a padlock hasp and provides comfortable seating and secure equipment storage. Combination padlocks (#30020) and keyed padlocks (#30025) are available as options upon request for the foot locker.

## DESIGNER GEAR LOCKER OPTIONS



*Note: Optional sloping hoods and side panels are sold separately.*

*Designer gear lockers feature a 11" W x 12" H recessed hasp top compartment that can accommodate built-in locks (#30010 for combination and #30015 for key) and padlocks (#30020 for combination and #30025 for key). Designer gear lockers include a ventilated front door that opens left to right and also include two wall hooks, a coat rod and a 14" high foot locker. The foot locker includes a hinged lid and a ventilated front panel with a padlock hasp for secure equipment storage that accommodates combination and keyed padlocks (#30020 and #30025).*

*Note: It is recommended that all lockers be wall and/or floor anchored.*

*For units without front door panels, see designer open access lockers on pages 64-65  
See ALL benches on pages 74-75*

**Current Pricing and Volume Discounts  
Available at [Lockers.com!](http://Lockers.com)**



*#30078's with optional side panel (#30034), sloping hoods (#30051), combination padlocks (#30020), custom engraved name / number plates (#30060) and aluminum benches (#77778) displayed*

## 24" Wide Designer Gear Lockers displayed with optional side panels

*(optional side panels sold separately)*

See ALL benches on pages 74-75



**30078**

**DESCRIPTION**  
30078<sup>1</sup> - 18" Deep Designer Gear Locker

**UNIT SIZE**  
24" W x 72" H x 18-3/4" D  
(76" H with base)

**WEIGHT**  
175 lbs.



**30074**

**DESCRIPTION**  
30074<sup>1</sup> - 24" Deep Designer Gear Locker

**UNIT SIZE**  
24" W x 72" H x 24-3/4" D  
(76" H with base)

**WEIGHT**  
200 lbs.

### DESIGNER GEAR LOCKER OPTIONS AND LOCKS

MODEL	DESCRIPTION	WEIGHT
<b>FOR 18" DEEP LOCKERS</b>		
30051 <sup>1</sup>	Sloping hood	15 lbs.
30033 <sup>1</sup>	Side panel without sloping hood	20 lbs.
30034 <sup>1</sup>	Side panel with sloping hood	20 lbs.
<b>FOR 24" DEEP LOCKERS</b>		
30052 <sup>1</sup>	Sloping hood	20 lbs.
30043 <sup>1</sup>	Side panel without sloping hood	25 lbs.
30044 <sup>1</sup>	Side panel with sloping hood	25 lbs.
30010	Built-in lock - combination style	
30011	Master control key - for built-in combination lock #30010	
30015	Built-in lock - key style with (2) keys	
30016	Master control key - for built-in key lock #30015	
30020	Padlock - combination style	
30021	Master control key - for combination padlock #30020	
30025	Padlock - key style with (2) keys	
30029	Key blanks - for #30025 key padlocks - box of (50)	
30090	Electronic lock (specify: silver or black finish)	
30095	Resettable combination lock (specify: silver or black finish)	
30096	Master control key - for resettable combination lock #30095	
30060	Name / number plate - 2-1/4" W x 1-1/8" H - black - engraved	



*Foot locker of designer gear locker (#30074) with optional combination padlock (#30020) displayed*

<sup>1</sup> Specify



gray



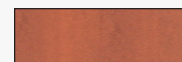
blue



black



maple



cherry



mahogany